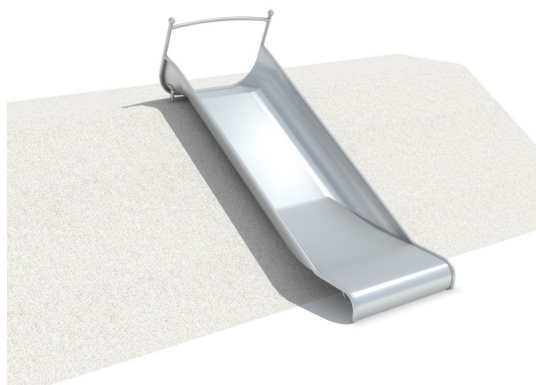


ELIRI 2,91m

Code: LL-MO-022



Description

The ground slide is designed for installation on natural or formed embankments. Length of slide 2,91 m, the width of slide 1,0 m. It's fully made of matt stainless steel. This slide should be mounted on an embankment that height is 0,9 - 1,3 m.

Playground device consists of

- 1x straight slide
- 2x foundation legs at the start section to embed
- 2x foundation legs at the finish section to embed

Product details

- Height of embankment: L1= 0,9-1,3 m
- Length of embankment slope: L2= 1,88 m
- Dimensions (LxWxH): 2,91 x 1,11 x 0,93 m
- Safety area on the end of the slide: a= 2,0 m
- Weight: 107 kg
- A certificate confirming compatibility with norm EN 1176
- Differences in dimensions no more than +/- 5% are acceptable

Materials

- Matt stainless steel (0304), the thickness of steel plate 2mm
- Foundation legs made of stainless steel
- Number of foundation concrete blocks: 2 pcs. (0,4 x 1,15 x 0,4m) – to be prepared on-site. In case of the loose surface of the hill, foundation blocks should be installed min. 0,4m under zero level

All images are for illustrative purposes only and may vary from the actual product.

