

# FULL SCENIC PADEL COURT IS COMPOSED OF:

**Metallic structure in S235JR steel**



## TECHNICAL DATACARD

### FULL SCENIC

**Full Scenic padel court model is a premium quality panoramic court manufactured with leading quality materials, in accordance with Spanish Padel Federation regulations and 100% compliant with the F.I.P. requirements.**

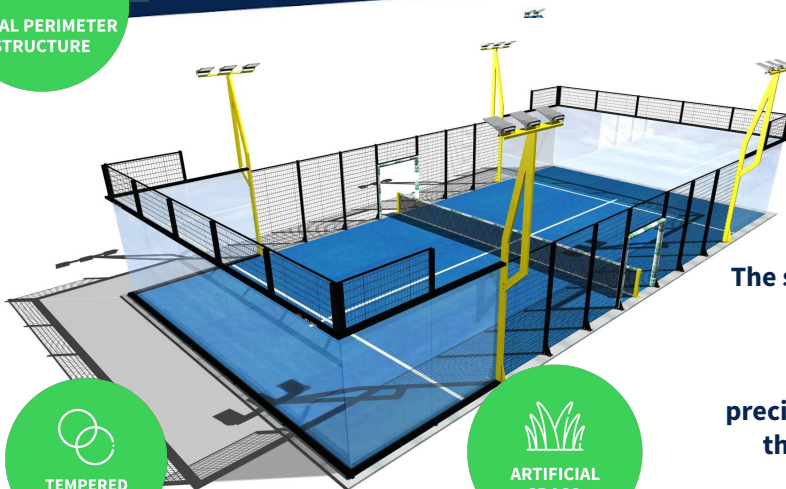
- 2 steel beams tubes of **120x60x2mm** in the glass area to fix glass with through screws. The 2 beams create a U of 4+10+4 mt.
- Floor beam with anchor plates of 245x160x10mm to be fixed to the concrete floor
- 4 lighting pillars of 100x60x2mm, 3+3=6 mt high, welded at the base to anchor plates of **300x150x10mm**.
- 14 electro-welded mesh panels (7 per glass side) of **2000x1000mm** + 1m-high pillars to connect the panels to each other and to the end of the beams.
- 12 electro-welded mesh panels (6 per mesh side) of **3000x1680mm** + 2 panels (1 per entrance) of **1000x2000mm**.
- 2 pillars with 1 central net + the tensioning system.
- Complete sets of A2 stainless steel screws: screws, washers, ground fixing studs, screw taps, etc.
- The entire metal structure receives a category C5 anti-corrosion treatment which consists of applying several steel washing processes, followed by the application of an anti-corrosion resin and finally, the application of a high quality 100 micron thick epoxy lacquer paint.



METAL PERIMETER STRUCTURE



LED PROJECTORS



TEMPERED GLASS



ARTIFICIAL GRASS

**The structure has been designed to resist winds of 13 m/s - 46 km/h 28 mph with glass and.**

**The assembly is extremely easy, fast and precise thanks to the design and laser cutting of the parts which avoid to drill, sand and other improvements during the installation.**

## Tempered glass:

- 18 **12mm** thick tempered glass walls measuring 1995x2995mm. Thermally tempered glass according to UNE-EN-12150-2 and compliant with the “HEAT SOAK” test of UNE-EN-14179-2.
- 60x4mm black EPDM gaskets (ethylene propylene) to be installed between the glass walls and the metal structure offering exceptional performance in extremely adverse weather and temperature conditions.
- PVC bushing to be installed in the conical holes of the glass walls in order to avoid contact between the glass fixing screw and the glass itself.
- Complete set of Allen type stainless steel screws with DIN M8x30 countersunk head to fix the glass walls to the pillars.

## Artificial grass

- Two brand are offered: Mondo Supercourt XN monofilament grass of 46.200 stiches and 10.000 dtex or FieldTurf PadelPro with the same characteristics. Colour: green and blue. The in-out extra grass are in option.
- Two-component joining strip and glue to install the grass.
- 2.000 kg of silica sand with grain size 0.2-0.5, specially for padel.

## LED projectors

- 12 LED floodlights of 150W each, IP66 protection rating offering 22.950 lumens per floodlight. Complies with standard UNE-EN 12193 “Lighting for TV sports facilities”. Em 878 lux - Emin/Em 0,71 lux.
- 4 electrical cables 6 m long to connect the projectors. Electrical connection system not included.

## Options

- Possibility of modifying the measures to adapt them to the available space.
- Sliding doors and personalized protectors at entrances.
- Colored sand.
- Reinforced anti-corrosion treatment with thermoplastic paint (+2 years warranty).

