



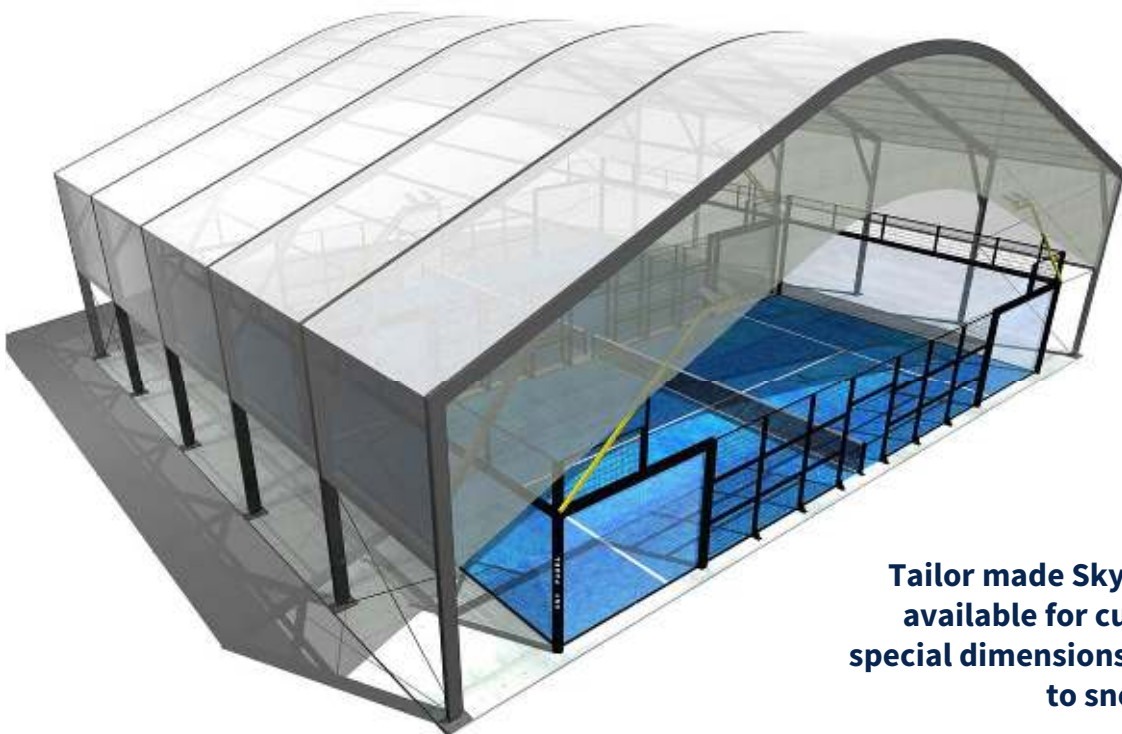
## TECHNICAL DATACARD COVERS

**Sky Padel designs and manufactures 10m high and 12 or 25 front curved covers for padel courts that comply with the EuroCodes, being possible to install them in very adverse areas with winds of up to 108 km/h, terrains with tensions of 0.1 MPa and snow resistance of up to 30 Kg/m<sup>2</sup>, 50 Kg/m<sup>2</sup> and 100 Kg/m<sup>2</sup>**

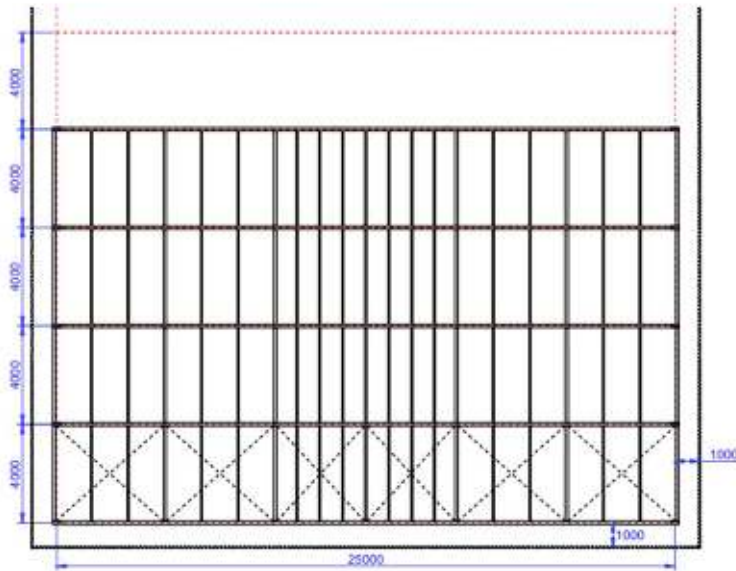
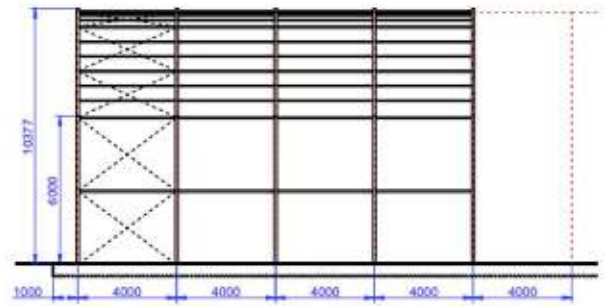
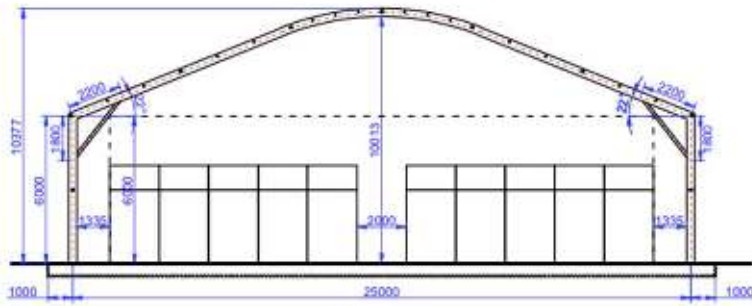
### Sky Padel's covers includes:

- 330x125x8m extruded aluminium structural pillars of 6m high for 25m front cover and 330x125x6m for 12m front cover
- 25m or 12m complete aluminium curved extruded profile structure for the roof
- Articulated anchor plates of 600x400x15mm, in S235JR galvanized steel, to be fixed by chemicals fixation to the concrete basement
- Serge Ferrari High quality prestressed PVC membrane in translucent white of 900 g/m<sup>2</sup>, anti-UV, fireproof M2 and offering 5 years warranty
- Options
  - Add on top 2m perimeter closing
  - Close the front and back front including gable pillars and membrane
  - Close 6m high on all the perimeter with translucent or transparent membrane
  - Add access doors
  - Membrane with customized logos and colors
  - Water channeling system,
  - Doble opac to limit heat inside the cover

**Sky Padel's covers complies with Eurocode 1, Eurocode 3, Eurocode 9 and the CTE**



**Tailor made Sky Padel's covers are available for customers who need special dimensions, higher resistance to snow and wind speed**



### Concrete basements recommended

- HA-25 reinforced concrete slab with a minimum thickness of 30cm. We recommend minimum 1m more than the perimeter of the roof on each side. Upper and lower grills  $\varnothing 12c / 30$ .
- HA-25 reinforced continuous concrete perimeter beam 3m wide and 50cm minimum depth. We recommend minimum 1m more than the perimeter of the roof on each side. Upper and lower grills  $\varnothing 12c / 25$ .
- Cube of concrete HM-25 with dimensions 325x225x75cm. We recommend minimum 1.65m more than the perimeter of the roof on each side.



[www.skypadel.com](http://www.skypadel.com)