

STEET BASKETBALL BACKSTOPS SQUARE
100x100mm HEIGHT 2.60 M OR 3.05 M
OFFSET 1,20m,TO EMBED OR ON PLATE

DOC N° :

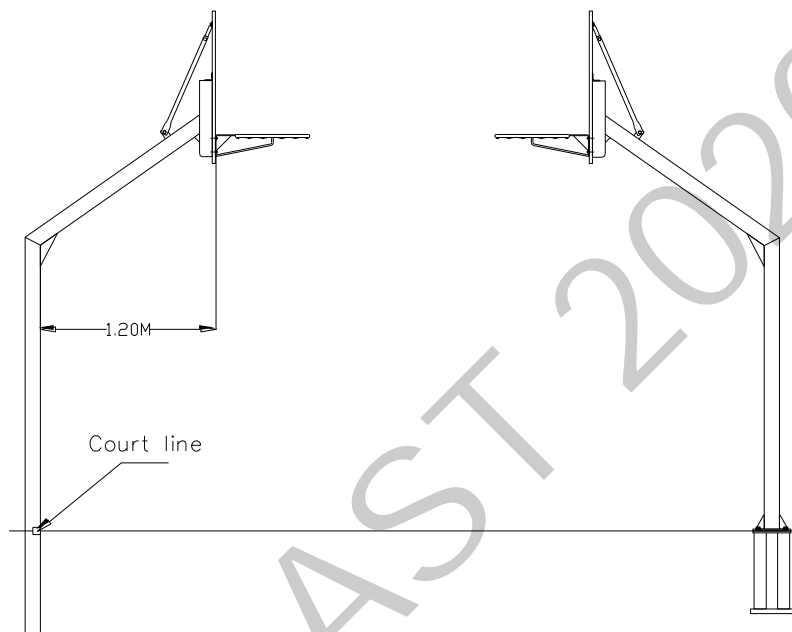
NDM_BB030XXX_CB

Ref:

BB030202 / BB030203 / BB030302 / BB030303
BB030602 / BB030603 / BB030702 / BB030703

Conform to :

NF EN 1270



Direct embedding

Sealing on
plate

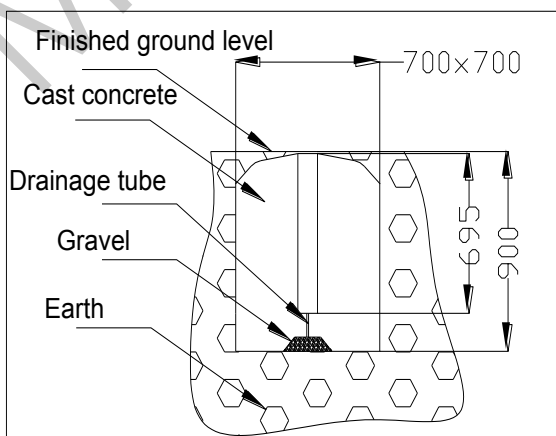


Warning :

- Each time the equipment is installed, it is essential to check the stability and strength of the goal visually and manually.
- The equipment must always be secured during use and be made unusable during storage.
- The equipment must be serviced by the owner to ensure it complies with safety requirements at all times.
- The owner must set up a periodic inspection and servicing schedule for the equipment.
- A log must be kept for each site, recording the date and result of the inspections and checks performed.
- The owner or operator must ensure that users are unable to access any equipment which does not comply with the safety requirements.
- Do not use this equipment for any purpose other than that for which it was originally designed.
- Do not hang from, climb up or swing on this equipment.

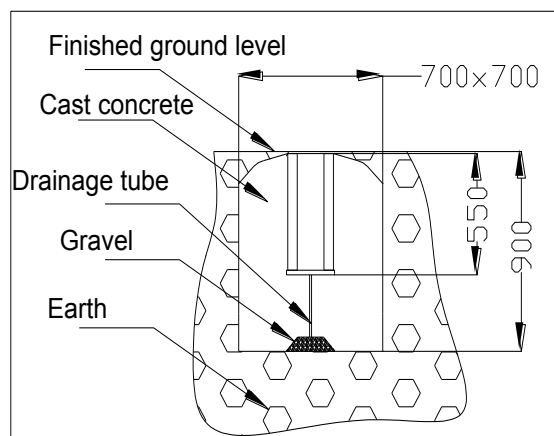
BUILDING OF THE CONCRETE FOUNDATION BLOCKS :

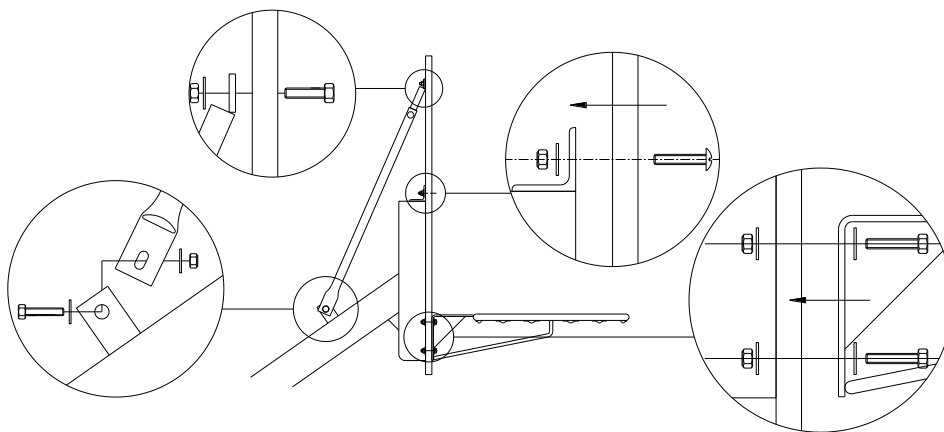
Scellement Direct embedding



Sealing on plate
(On stable ground)

The top of the plate is flush with the ground



ASSEMBLY :

- Fasten the backboard on the backboard support with M8x40 pan head screws, washers and M8 locknuts.
 - Fasten the hoop on the backboard support with HM8x60 screws, washers and M8 locknuts.
 - Check the verticality/horizontality of backboard/rim, as well as the height of the top of the rim from the ground.
 - Fasten the braces with HM10x40 screws, washers and M10 locknuts.
 - Check the resistance and stability in compliance with appendix III -1, art. 322-22 of the code of sport.
- * for plates, previously attach the goal to its anchor with HM18x50 screws.

PACKING :

		STREET BASKET EMBEDDING DIRECTLY				STREET BASKET ON PLATE			
		2.60M HEIGHT BB030401/ 402 / 403		3.05M HEIGHT BB0300801 / 802 / 803		2.60M HEIGHT BB030501 / 502 / 503		3.05M HEIGHT BB030901 / 902 / 903	
Parcel N°	Type of equipment	Size mm	Weight Kg.	Size mm	Weight Kg.	Size mm	Weight Kg.	Size mm	Weight Kg.
1/5	1 Single tube 100x100mm	4000x1000x120	42.90	4500x1000x120	47.00	3400x1000x120	43.70	3800x1000x120	47.80
2/5	1 Single tube 100x100mm	4000x1000x120	42.90	4500x1000x120	47.00	3400x1000x120	43.70	3800x1000x120	47.80
3/5	- 2 PES pannels 100x100mm - 4 Braces	1250x1050x250	72.00	1250x1050x250	72.00	1250x1050x250	72.00	1250x1050x250	72.00
4/5	Accessory parcel: - 8 HM8x60 screws - 4 M8x40 pan head screws - 12 M8 lock nuts - 20 Ø8 washers - 4 HM10x30 screws - 2 HM10x40 screws - 12 Ø10 washers - 6 M10 lock nuts - 2 Hoops - 2 Nets	700x510x175	15.30	700x510x175	15.30				
5/5	Accessory parcel (same as 4/5) - 2 Anchorings								

**Tools required:**

- 1 spanner 13
- 1 slotted screwdriver
- 1 mallet
- * 1 spanner 27 mm for plates

- Weight of a pair of basketball goals, direct sealing, height 2.60m: **152 kg**
- Weight of a pair of basketball goals, direct sealing, height 3.05m: **161 kg**
- Weight of a pair of basketball goals, on plates, height 2.60m: **153 kg**
- Weight of a pair of basketball goals, on plates, height 3.05m: **162 kg**
- Weight of a pair of plates: **31 kg**